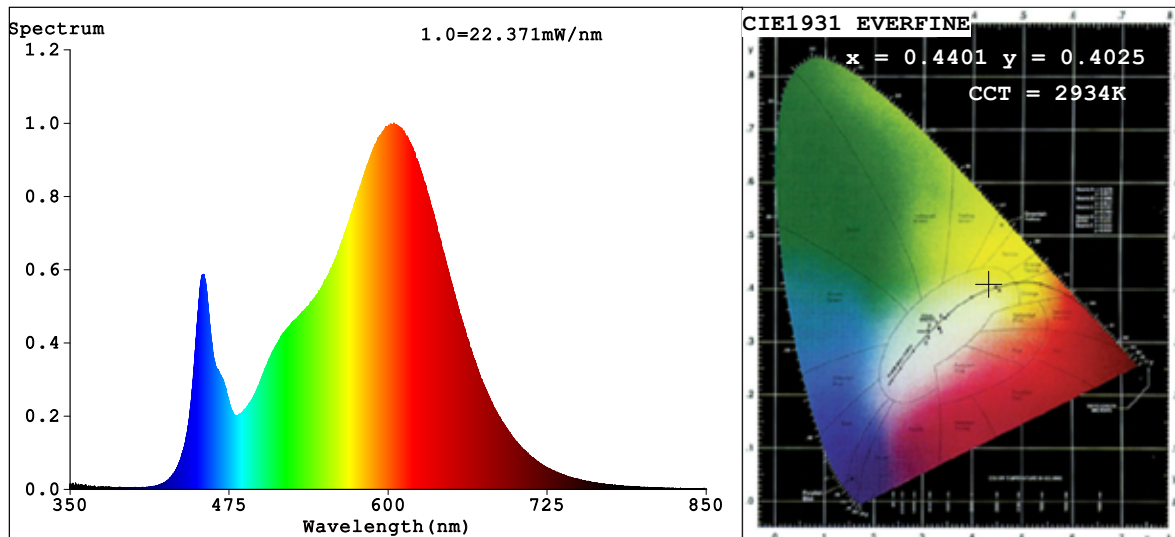


Spectrum Test Report



Color Parameters:

Chromaticity Coordinate: $x=0.4401$ $y=0.4025$ $u'=0.2533$ $v'=0.5213$
 CCT=2934K (Duv=-0.0010) Dominant WL: $\lambda_d = 583.5\text{nm}$ Purity=52.9%
 Ratio: R=23.5% G=73.8% B=2.7%; Peak WL: $\lambda_p = 604.5\text{nm}$ FWHM=117.7nm
 Render Index: Ra=82.5 CRI=77.4 TM30: Rf=82 Rg=95
 R1 =82 R2 =93 R3 =94 R4 =80 R5 =82 R6 =92 R7 =81
 R8 =57 R9 =6 R10=84 R11=79 R12=73 R13=85 R14=97 R15=74

Photo Parameters:

Flux = 1056 lm Eff. : 102.97 lm/W $\Phi_e = 3.206\text{ W}$

Electrical parameters:

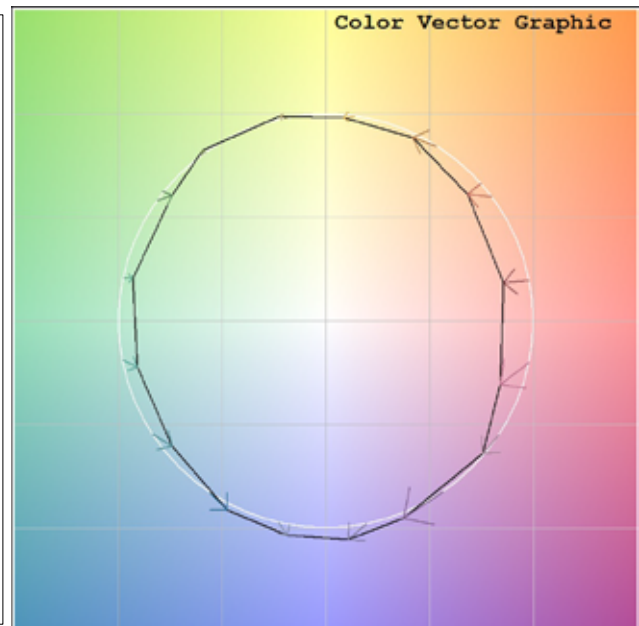
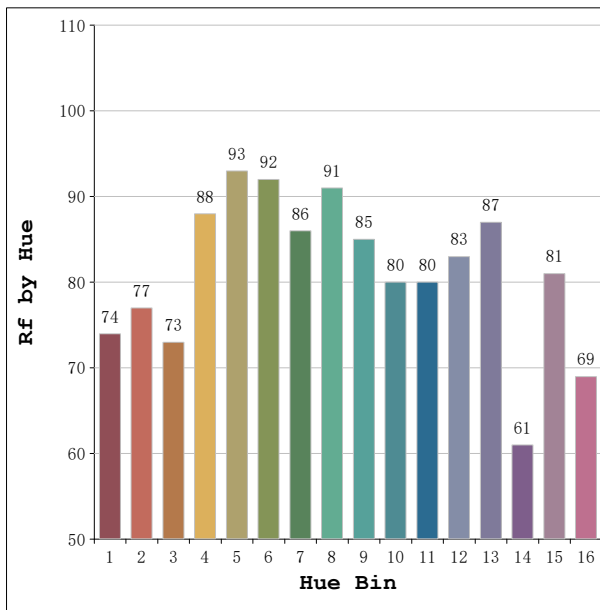
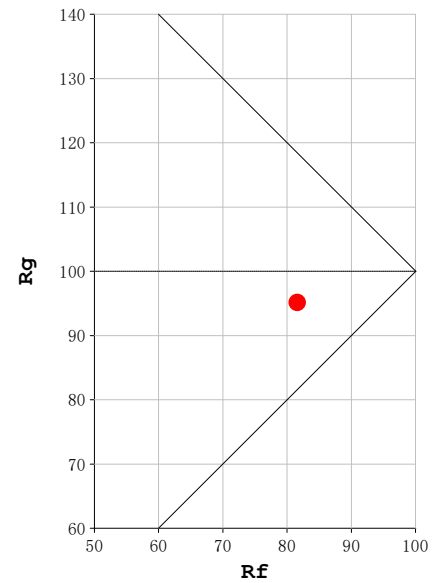
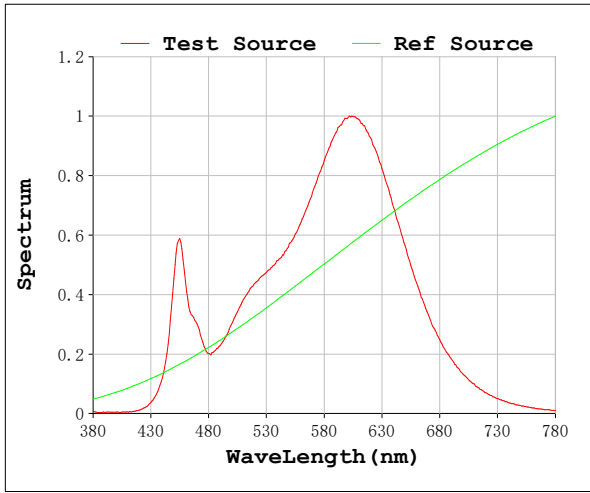
V = 23.998 V I = 0.4274 A P = 10.26 W PF = 1.000

Status: Integral T = 1250 ms $I_p = 54222$ (83%)

Model: Ecoled Vizaya 3000
 Tester: Sergio Carneros
 Temperature: 27Deg
 Manufacturer: Luz Negra S.L.

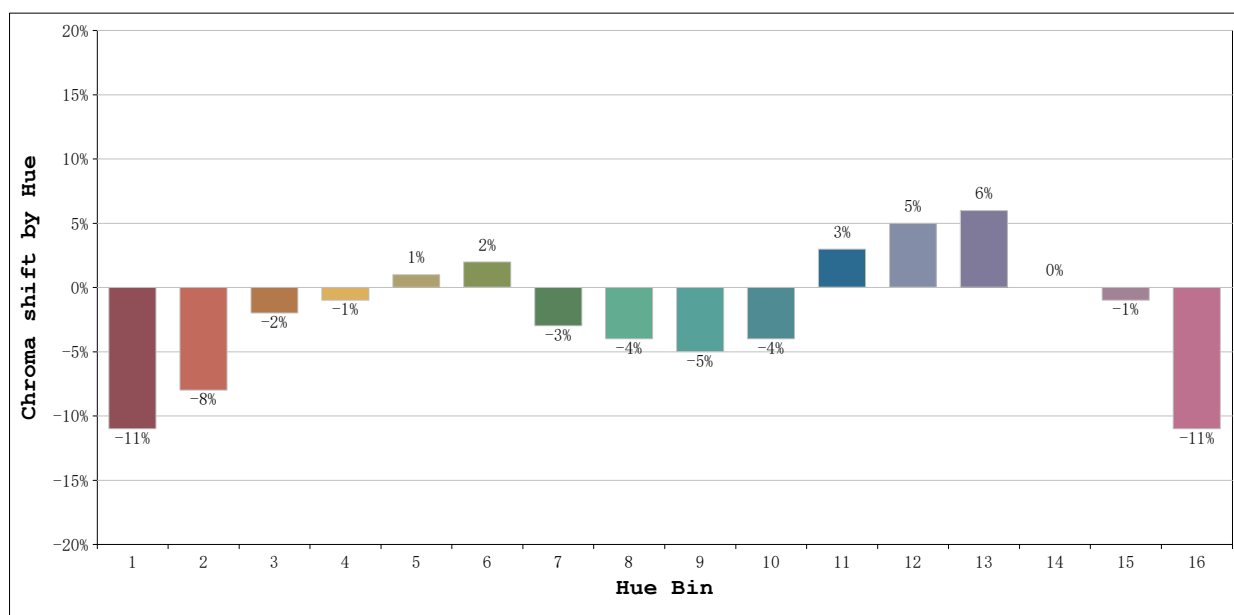
Number: 32.227
 Date: 2026-06-02 08:06:25
 Humidity: 35%
 Remarks: 100cm de tira flexible

Rf: 82 **CCT: 2934 K** **u': 0.2533**
Rg: 95 **Duv: -0.0010** **v': 0.5213**



Model:Ecoled Vizaya 3000
Tester:Sergio Carneros
Temperature:27Deg
Manufacturer:Luz Negra S.L.

Number: 32.227
Date:2026-06-02 08:06:25
Humidity:35%
Remarks:100cm de tira flexible



			Graphic shift(%)	
Hue Bin	Hue Angle	Rf	Chroma	Hue
1	0.0° - 22.5°	74	-11	1
2	22.5° - 45.0°	77	-8	8
3	45.0° - 67.5°	73	-2	12
4	67.5° - 90.0°	88	-1	5
5	90.0° - 112.5°	93	1	3
6	112.5° - 135.0°	92	2	0
7	135.0° - 157.5°	86	-3	-5
8	157.5° - 180.0°	91	-4	0
9	180.0° - 202.5°	85	-5	5
10	202.5° - 225.0°	80	-4	10
11	225.0° - 247.5°	80	3	12
12	247.5° - 270.0°	83	5	5
13	270.0° - 292.5°	87	6	-9
14	292.5° - 315.0°	61	0	-22
15	315.0° - 337.5°	81	-1	-11
16	337.5° - 360.0°	69	-11	-12

Model:Ecoled Vizaya 3000
 Tester:Sergio Carneros
 Temperature:27Deg
 Manufacturer:Luz Negra S.L.

Number: 32.227
 Date:2026-06-02 08:06:25
 Humidity:35%
 Remarks:100cm de tira flexible